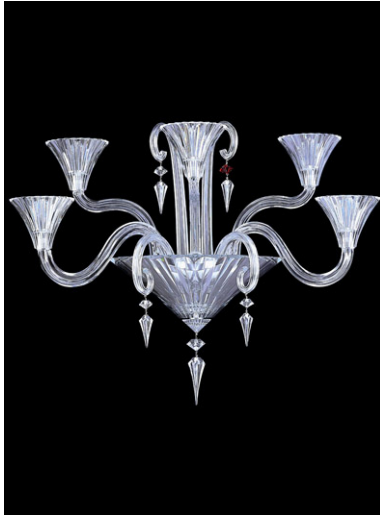




MILLE NUITS WALL UNIT by Mathias

5L, Clear crystal



History :

For designer Mathias, the Milles Nuits (A Thousand Nights) collection is a tribute to the fairy tales he heard and adored during his childhood travelling between Syria and Turkey. This collection brilliantly combines poetry and high-design and brings to mind a universe infused with a special magic where evening light call to mind a dream straight out of the Arabian Nights.

Composition :

All-crystal bevel-cut wall unit. Available in 2, 3 and 5 lights. Each wall unit also exists in a version with bobeches (drip pans). Full arms, straight and curved canes in bevel-cut crystal. Ornaments include hexagonal beads and prisms. One red bead, a Baccarat signature.

General information

Diffused lighting
 Power supply: block terminal
 Transformer location: inside the product
 Cable length: 3,93 in
 Product weight: 27,78 lbs

Reference number: 2102823 CEI*

5 x 20W G4
 4 x 5W G4
 Maximum electrical power: 120W
 Voltage: 220-240V~
 Frequency: 50/60Hz
 Power switch: direct power
 Electronic transformer

Certifications



Reference number: 2102824 UL*

5 x 20W G4
 4 x 5W G4
 Maximum electrical power: 120W
 Voltage: 120VAC
 Frequency: 60Hz
 Power switch: direct power
 Electronic transformer

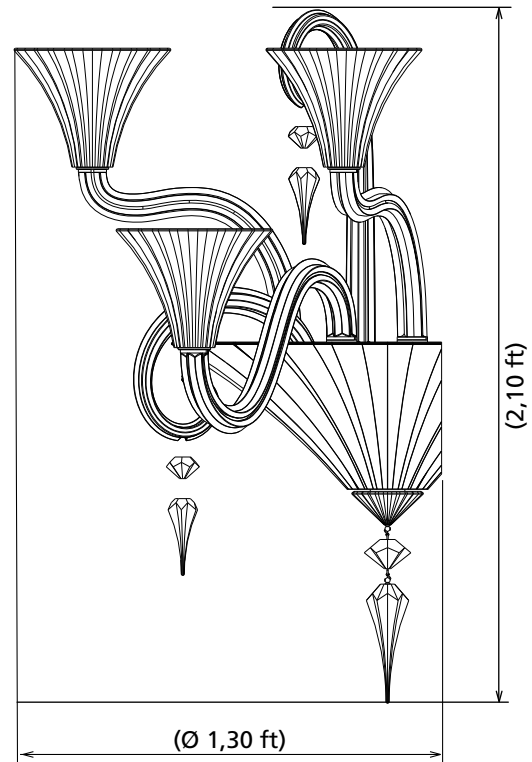
Certifications



Reference number: 2102825 JETRO*

5 x 20W G4
 4 x 5W G4
 Maximum electrical power: 120W
 Voltage: 100-127V~
 Frequency: 50/60Hz
 Power switch: direct power
 Electronic transformer

Certifications



MILLE NUITS Collection



2104856

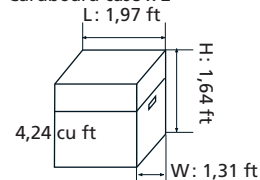
2106044

2103685

2102805

Packaging

Cardboard case x 2



Unitarian weight: 2,76 lbs
 Total volume: 11,02 cu ft
 Total weight except product: 23,85 lbs

* For more information, please refer to FAQ.